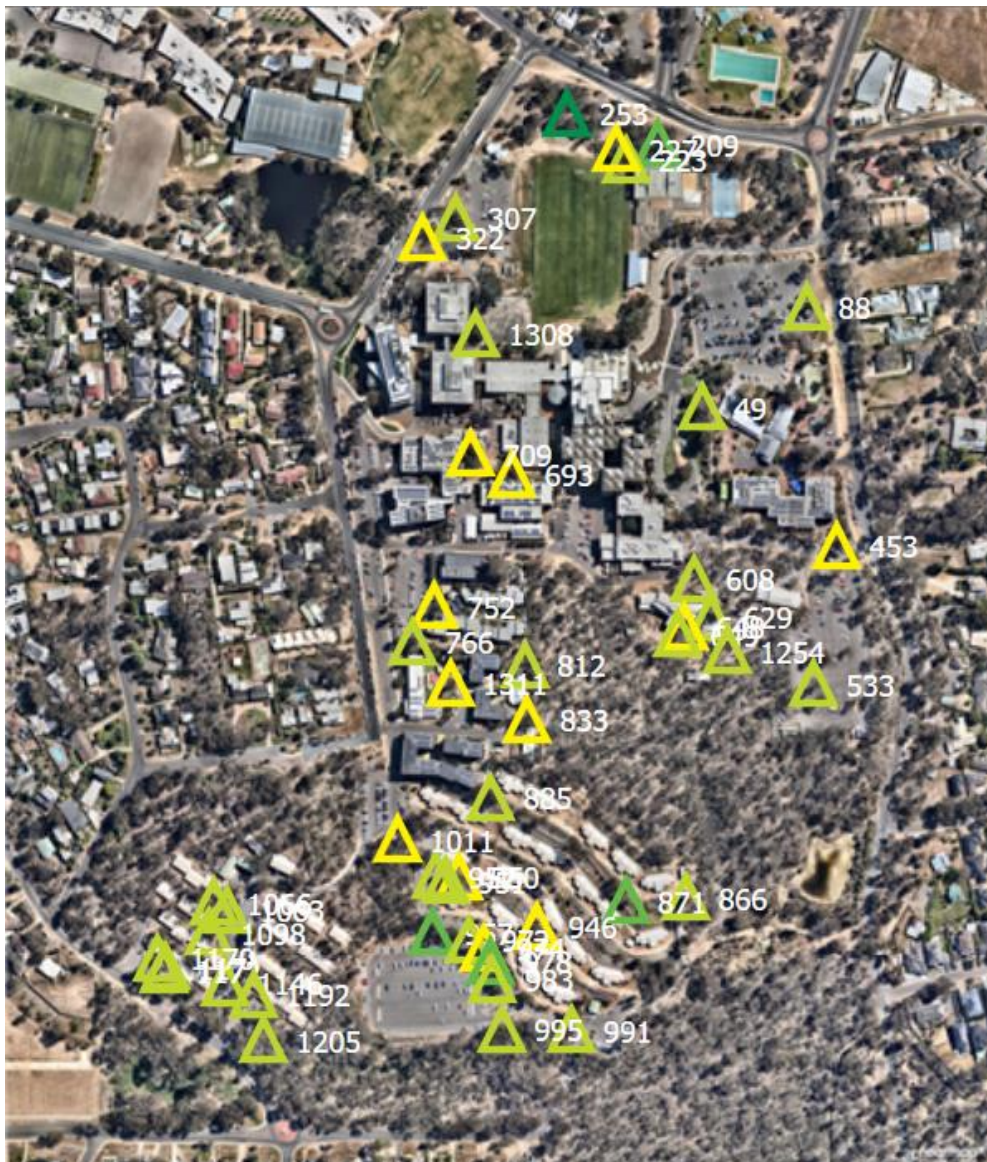


Significant habitats and active nesting – Bendigo

Trees with hollows or nests indicate the presence of valuable microhabitats that support diverse wildlife. The map below highlights trees on campus with significant habitats and/ or active nesting.

Significant habitats refer to hollows or nests that have the potential to support wildlife, while **active nesting** indicate that fauna, such as birds, were observed using the hollow or nest at the time of assessment.



Map: Aerial image showing location of trees with significant habitat or active nesting.

Note 1: Icon colour is not relevant to tree characteristic or value.

Note 2: Areas with minimal disturbance or limited access are not included in this assessment.

List of trees with significant habitats and/or active nesting:

Tree Number	Botanical Name	Common Name	Height [m]	DBH [mm]	Canopy Spread [m]	Health	Age	ULE	Tree Significance
49	<i>Eucalyptus leucoxylon</i> ssp. <i>leucoxylon</i>	Yellow Gum	15-20	800	15-20	Good	Mature	25-50	Amenity value/shade; Attractive landscape feature; Dominant landscape feature; Active nesting by fauna;
88	<i>Corymbia maculata</i>	Spotted Gum	10-15	300	5-10	Good	Semi-Mature	25-50	Amenity value/shade; Active nesting by fauna;
209	<i>Corymbia maculata</i>	Spotted Gum	5-10	400	<5	Good	Semi-Mature	5-10	Significant habitat - nests/hollows;
223	<i>Corymbia maculata</i>	Spotted Gum	15-20	500	10-15	Good	Semi-Mature	25-50	Amenity value/shade; Active nesting by fauna; Attractive landscape feature;
227	<i>Corymbia maculata</i>	Spotted Gum	15-20	550	10-15	Good	Mature	25-50	Amenity value/shade; Active nesting by fauna; Attractive landscape feature;
253	<i>Corymbia maculata</i>	Spotted Gum	5-10	100	<5	Poor	Juvenile	5-10	Active nesting by fauna;
307	<i>Corymbia maculata</i>	Spotted Gum	10-15	300	5-10	Good	Semi-Mature	15-25	Active nesting by fauna; Amenity value/shade;
322	<i>Corymbia citriodora</i>	Lemon-scented Gum	10-15	400	10-15	Good	Semi-Mature	15-25	Active nesting by fauna; Attractive landscape feature; Amenity value/shade;
453	<i>Eucalyptus tricarpa</i>	Red Ironbark	15-20	600	10-15	Good	Mature	25-50	Active nesting by fauna; Significant due to age/size; Amenity value/shade; Attractive landscape feature; Dominant landscape feature;
533	<i>Eucalyptus tricarpa</i>	Red Ironbark	15-20	700	10-15	Good	Mature	25-50	Active nesting by fauna; Attractive landscape feature; Amenity value/shade; Dominant landscape feature;
608	<i>Eucalyptus microcarpa</i>	Grey Box	5-10	300	<5	Poor	Semi-Mature	5-10	Significant habitat - nests/hollows;
629	<i>Eucalyptus microcarpa</i>	Grey Box	5-10	500	<5	Poor	Mature	25-50	Significant habitat - nests/hollows;
648	<i>Eucalyptus tricarpa</i>	Red Ironbark	10-15	450	10-15	Good	Mature	25-50	Active nesting by fauna; Attractive landscape feature; Amenity value/shade; Dominant landscape feature;
649	<i>Eucalyptus tricarpa</i>	Red Ironbark	5-10	600	10-15	Poor	Mature	15-25	Significant habitat - nests/hollows;

693	Eucalyptus polyanthemos	Red Box	10-15	500	10-15	Fair	Mature	25-50	Amenity value/shade; Attractive landscape feature; Dominant landscape feature; Active nesting by fauna;
709	Corymbia maculata	Spotted Gum	15-20	750	15-20	Good	Mature	25-50	Active nesting by fauna; Attractive landscape feature; Amenity value/shade; Dominant landscape feature; Significant due to age/size;
752	Corymbia maculata	Spotted Gum	20-30	750	15-20	Good	Mature	>50	Hort. value - propagation; Outstanding example of species; Significant due to age/size; Active nesting by fauna; Amenity value/shade; Attractive landscape feature; Dominant landscape feature;
766	Corymbia maculata	Spotted Gum	15-20	550	10-15	Good	Semi-Mature	>50	Active nesting by fauna; Dominant landscape feature; Amenity value/shade; Attractive landscape feature;
812	Corymbia citriodora	Lemon-scented Gum	5-10	150	<5	Good	Juvenile	15-25	Active nesting by fauna; Amenity value/shade;
833	Eucalyptus tricarpa	Red Ironbark	15-20	1100	10-15	Good	Mature	15-25	Active nesting by fauna; Dominant landscape feature; Attractive landscape feature; Amenity value/shade; Significant due to age/size;
866	Eucalyptus polyanthemos	Red Box	10-15	350	5-10	Good	Semi-Mature	25-50	Active nesting by fauna; Amenity value/shade; Attractive landscape feature;
871	Eucalyptus macrandra	Long-flowered Marlock	5-10	250	5-10	Good	Semi-Mature	15-25	Amenity value/shade; Active nesting by fauna;
885	Corymbia maculata	Spotted Gum	10-15	350	5-10	Good	Semi-Mature	25-50	Active nesting by fauna; Amenity value/shade; Attractive landscape feature;
946	Eucalyptus leucoxylon ssp. leucoxylon	Yellow Gum	20-30	600	10-15	Good	Semi-Mature	25-50	Significant habitat - nests/hollows; Amenity value/shade; Attractive landscape feature; Dominant landscape feature;
950	Eucalyptus leucoxylon ssp. leucoxylon	Yellow Gum	15-20	450	10-15	Good	Semi-Mature	15-25	Attractive landscape feature; Amenity value/shade; Dominant landscape feature; Active nesting by fauna;

951	Eucalyptus leucoxylo ssp. leucoxylo	Yellow Gum	15-20	350	5-10	Good	Semi-Mature	25-50	Attractive landscape feature; Amenity value/shade; Dominant landscape feature; Active nesting by fauna;
952	Eucalyptus blakelyi	Blakely's Red Gum	5-10	250	5-10	Good	Juvenile	5-10	Amenity value/shade; Active nesting by fauna;
957	Corymbia maculata	Spotted Gum	5-10	200	5-10	Good	Juvenile	25-50	Active nesting by fauna; Amenity value/shade;
972	Corymbia maculata	Spotted Gum	10-15	300	5-10	Good	Juvenile	25-50	Active nesting by fauna; Attractive landscape feature; Amenity value/shade;
974	Corymbia maculata	Spotted Gum	20-30	550	10-15	Good	Semi-Mature	25-50	Attractive landscape feature; Amenity value/shade; Dominant landscape feature; Active nesting by fauna;
978	Corymbia maculata	Spotted Gum	5-10	250	5-10	Good	Juvenile	25-50	Active nesting by fauna; Amenity value/shade;
983	Corymbia maculata	Spotted Gum	5-10	300	5-10	Good	Juvenile	15-25	Active nesting by fauna; Amenity value/shade;
991	Eucalyptus polyanthemos	Red Box	5-10	250	5-10	Good	Semi-Mature	15-25	Amenity value/shade; Active nesting by fauna;
995	Eucalyptus microcarpa	Grey Box	10-15	300	5-10	Good	Semi-Mature	25-50	Attractive landscape feature; Amenity value/shade; Active nesting by fauna;
1011	Eucalyptus microcarpa	Grey Box	10-15	350	5-10	Good	Semi-Mature	25-50	Amenity value/shade; Attractive landscape feature; Active nesting by fauna;
1063	Eucalyptus microcarpa	Grey Box	15-20	350	5-10	Fair	Semi-Mature	10-15	Amenity value/shade; Attractive landscape feature; Active nesting by fauna;
1066	Eucalyptus tricarpa	Red Ironbark	15-20	450	5-10	Poor	Semi-Mature	5-10	Amenity value/shade; Active nesting by fauna;
1098	Eucalyptus polyanthemos	Red Box	10-15	450	10-15	Good	Semi-Mature	25-50	Suitable to site conditions; Amenity value/shade; Active nesting by fauna;
1146	Eucalyptus tricarpa	Red Ironbark	10-15	450	10-15	Good	Semi-Mature	15-25	Dominant landscape feature; Suitable to site conditions; Amenity value/shade; Active nesting by fauna;
1170	Eucalyptus polyanthemos	Red Box	10-15	500	10-15	Good	Semi-Mature	10-15	Active nesting by fauna; Attractive landscape feature; Amenity value/shade;
1171	Eucalyptus tricarpa	Red Ironbark	10-15	300	5-10	Fair	Semi-Mature	10-15	Active nesting by fauna; Amenity value/shade;

1172	Eucalyptus tricarpa	Red Ironbark	15-20	550	10-15	Fair	Semi-Mature	10-15	Amenity value/shade; Active nesting by fauna;
1192	Eucalyptus polyanthemos	Red Box	10-15	300	5-10	Fair	Semi-Mature	5-10	Amenity value/shade; Active nesting by fauna;
1205	Eucalyptus melliodora	Yellow Box	15-20	450	10-15	Good	Semi-Mature	25-50	Active nesting by fauna; Attractive landscape feature; Amenity value/shade; Dominant landscape feature;
1254	Eucalyptus polyanthemos	Red Box	5-10	300	5-10	Poor	Semi-Mature	<5	Active nesting by fauna;
1308	Angophora costata	Smooth-barked Apple Myrtle	5-10	650	10-15	Good	Semi-Mature	25-50	Attractive landscape feature; Amenity value/shade; Active nesting by fauna;
1311	Eucalyptus tricarpa	Red Ironbark	15-20	500	10-15	Good	Mature	15-25	Dominant landscape feature; Attractive landscape feature; Amenity value/shade; Active nesting by fauna;