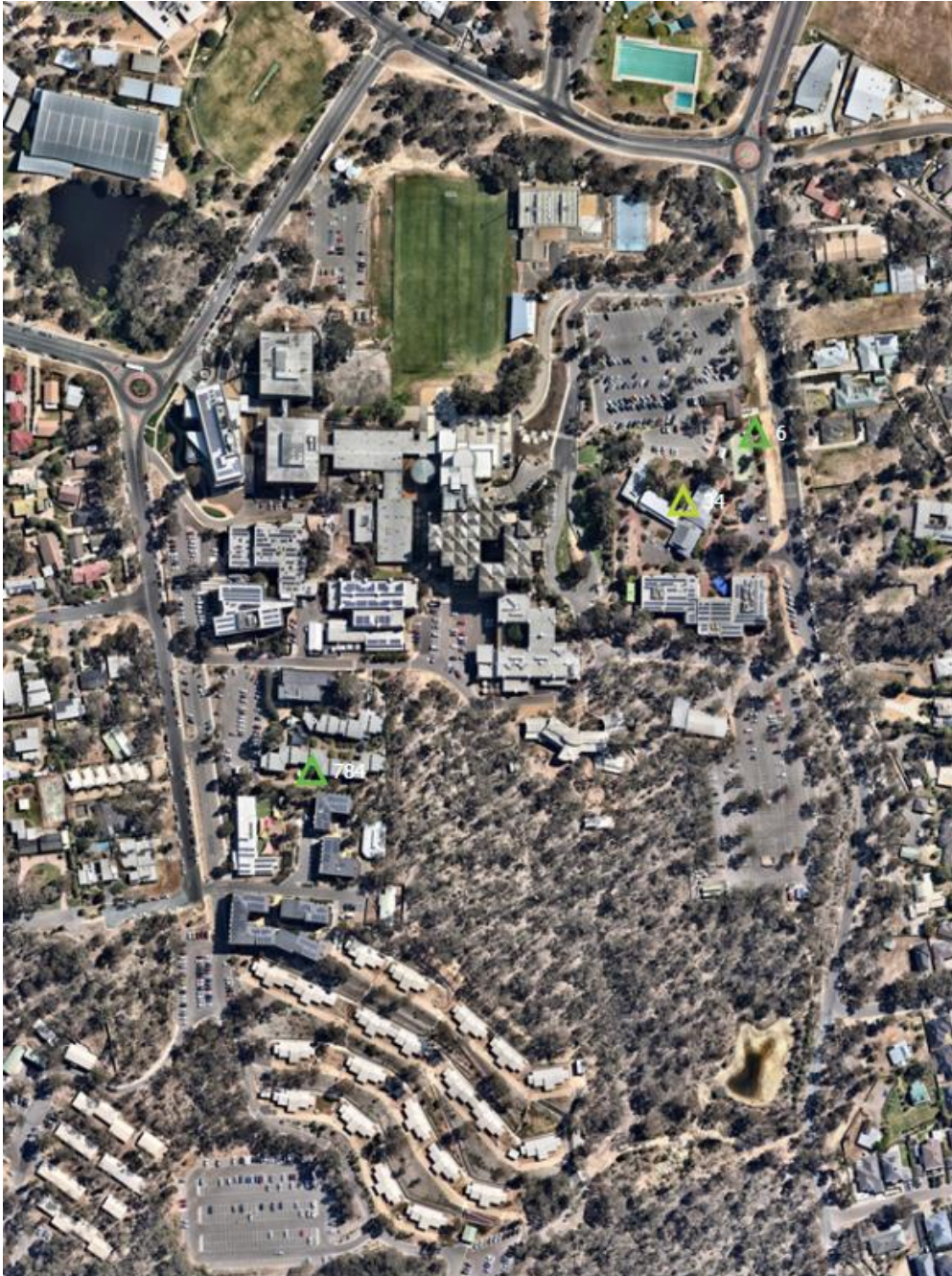


## Weed species- Bendigo

Environmental weeds are non-native plants that can invade natural habitats, outcompeting native species and disrupting ecosystems. Monitoring these weeds is essential to protecting biodiversity by preventing their spread and ensuring they are effectively controlled or, in some cases, removed.

The map below shows the location of tree weeds on campus:



Map: Aerial image showing location of environmental weeds on Bendigo Campus.

Note: Areas with minimal disturbance or limited access are not included in this assessment.

List of tree weeds:

Tree Number	Botanical Name	Common Name	Height [m]	DBH [mm]	Canopy Spread [m]	Health
6	<i>Fraxinus angustifolia</i> ssp. <i>angustifolia</i>	Desert Ash	<5	100	<5	Fair
34	<i>Fraxinus angustifolia</i> ssp. <i>angustifolia</i>	Desert Ash	10-15	350	5-10	Good
784	<i>Pittosporum undulatum</i>	Sweet Pittosporum	<5	150	<5	Fair