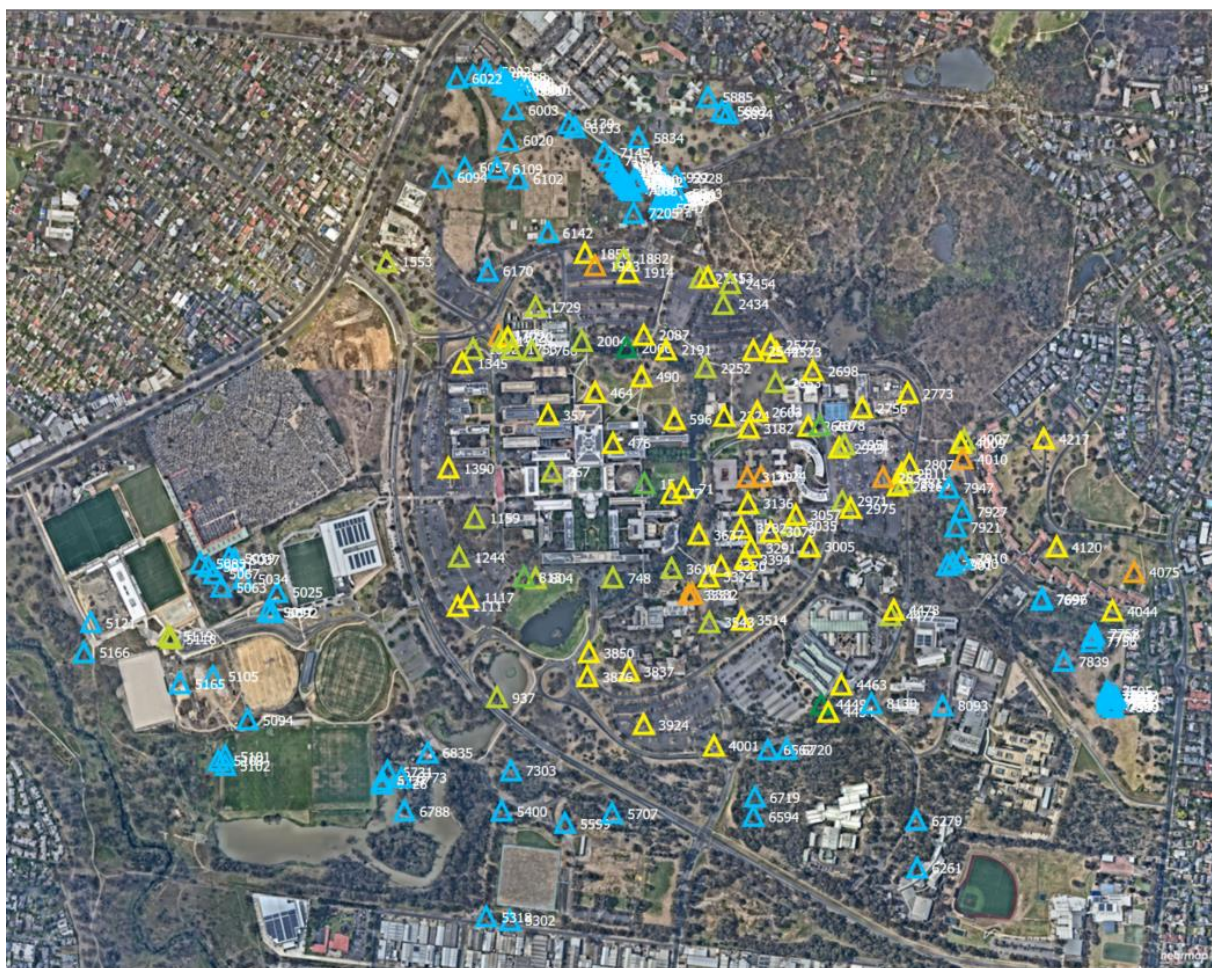


Significant habitats and active nesting – Bundoora campus

Trees with hollows or nests indicate the presence of valuable microhabitats that support diverse wildlife. The map below highlights trees on campus with significant habitats and/ or active nesting.

Significant habitats refer to hollows or nests that have the potential to support wildlife, while **active nesting** means that fauna, such as birds, were observed using the hollow or nest at the time of assessment.



Map: Aerial image showing location of trees with significant habitats or active nesting.

Note 1: Icon colour is not relevant to tree characteristic or value.

Note 2: Areas with minimal disturbance or limited access are not included in this assessment.

List of trees with significant hollows and/or active nesting:

Tree Number	Botanical Name	Common Name	Height [m]	DBH [mm]	Canopy Spread [m]	Health	Age	ULE	Tree Significance
15	<i>Allocasuarina torulosa</i>	Forest She-oak	5-10	200	5-10	Good	Semi-Mature	25-50	Amenity value/shade; Significant habitat - nests/hollows;
71	<i>Corymbia maculata</i>	Spotted Gum	10-15	350	5-10	Good	Semi-Mature	25-50	Amenity value/shade; Attractive landscape feature; Active nesting by fauna;
77	<i>Eucalyptus camaldulensis</i>	River Red Gum	10-15	700	10-15	Good	Mature	25-50	Active nesting by fauna; Amenity value/shade;
267	<i>Casuarina glauca</i>	Swamp she-oak	10-15	250	5-10	Good	Semi-Mature	15-25	Amenity value/shade; Active nesting by fauna; Within group;
357	<i>Corymbia maculata</i>	Spotted Gum	15-20	450	5-10	Good	Semi-Mature	15-25	Active nesting by fauna; Amenity value/shade; Attractive landscape feature;
464	<i>Eucalyptus camaldulensis</i>	River Red Gum	15-20	850	10-15	Good	Semi-Mature	15-25	Amenity value/shade; Significant due to age/size; Dominant landscape feature; Attractive landscape feature; Significant habitat - nests/hollows;
476	<i>Eucalyptus camaldulensis</i>	River Red Gum	20-30	1050	15-20	Good	Mature	25-50	Attractive landscape feature; Amenity value/shade; Dominant landscape feature; Significant due to age/size; Significant habitat - nests/hollows; Active nesting by fauna;
490	<i>Eucalyptus cladocalyx</i>	Sugar Gum	5-10	600	5-10	Good	Semi-Mature	<5	Active nesting by fauna; Amenity value/shade;
596	<i>Corymbia maculata</i>	Spotted Gum	15-20	650	10-15	Good	Mature	15-25	Amenity value/shade; Attractive landscape feature; Active nesting by fauna; Dominant landscape feature;
748	<i>Eucalyptus saligna</i>	Sydney Blue Gum	15-20	950	15-20	Good	Mature	25-50	Amenity value/shade; Attractive landscape feature; Significant due to age/size; Active nesting by fauna;
804	<i>Eucalyptus sideroxylon</i>	Red Ironbark	10-15	300	5-10	Good	Semi-Mature	25-50	Amenity value/shade; Active nesting by fauna; Attractive landscape feature;
813	<i>Corymbia maculata</i>	Spotted Gum	5-10	150	<5	Good	Juvenile	15-25	Active nesting by fauna;
937	<i>Corymbia maculata</i>	Spotted Gum	10-15	550	10-15	Good	Mature	25-50	Amenity value/shade; Active nesting by fauna;
1111	<i>Corymbia maculata</i>	Spotted Gum	15-20	400	5-10	Fair	Semi-Mature	15-25	Amenity value/shade; Attractive landscape feature; Significant habitat - nests/hollows;
1117	<i>Corymbia maculata</i>	Spotted Gum	15-20	500	10-15	Fair	Semi-Mature	25-50	Amenity value/shade; Attractive landscape feature; Significant habitat - nests/hollows; Active nesting by fauna;
1159	<i>Eucalyptus camaldulensis</i>	River Red Gum	15-20	600	10-15	Good	Semi-Mature	>50	Dominant landscape feature; Amenity value/shade; Active nesting by fauna; Significant habitat - nests/hollows;
1244	<i>Melaleuca styphelioides</i>	Prickly-leaved Paperbark	5-10	150	<5	Fair	Semi-Mature	15-25	Active nesting by fauna;

1332	<i>Eucalyptus melliodora</i>	Yellow Box	5-10	500	5-10	Good	Semi-Mature	25-50	Amenity value/shade; Active nesting by fauna;
1345	<i>Eucalyptus melliodora</i>	Yellow Box	15-20	750	10-15	Fair	Semi-Mature	15-25	Amenity value/shade; Significant habitat - nests/hollows;
1390	<i>Corymbia maculata</i>	Spotted Gum	15-20	700	10-15	Good	Semi-Mature	25-50	Significant habitat - nests/hollows; Amenity value/shade; Attractive landscape feature; Dominant landscape feature; Active nesting by fauna;
1553	<i>Corymbia maculata</i>	Spotted Gum	15-20	450	5-10	Good	Semi-Mature	15-25	Amenity value/shade; Significant habitat - nests/hollows;
1709	<i>Eucalyptus cladocalyx</i>	Sugar Gum	15-20	1050	15-20	Good	Mature	<5	Amenity value/shade; Attractive landscape feature; Significant habitat - nests/hollows;
1713	<i>Eucalyptus cladocalyx</i>	Sugar Gum	10-15	750	5-10	Poor	Mature	<5	Amenity value/shade; Significant habitat - nests/hollows; Attractive landscape feature; Particularly old/venerable; Significant due to age/size;
1720	<i>Eucalyptus camaldulensis</i>	River Red Gum	15-20	850	10-15	Good	Semi-Mature	25-50	Attractive landscape feature; Amenity value/shade; Active nesting by fauna; Dominant landscape feature;
1729	<i>Hesperocyparis macrocarpa</i>	Monterey Cypress	5-10	450	5-10	Fair	Semi-Mature	15-25	Attractive landscape feature; Amenity value/shade; Active nesting by fauna; Rare or localised distribution;
1753	<i>Melaleuca armillaris</i>	Bracelet Honey Myrtle	5-10	250	5-10	Good	Mature	5-10	Active nesting by fauna;
1766	<i>Corymbia maculata</i>	Spotted Gum	10-15	400	5-10	Fair	Semi-Mature	25-50	Attractive landscape feature; Amenity value/shade; Active nesting by fauna;
1856	<i>Eucalyptus camaldulensis</i>	River Red Gum	10-15	1350	<5	Dead	Mature	5-10	Significant habitat - nests/hollows;
1882	<i>Eucalyptus leucoxylon</i> ssp. <i>pruinosa</i>	Yellow Gum	10-15	500	10-15	Good	Semi-Mature	25-50	Active nesting by fauna; Amenity value/shade; Attractive landscape feature;
1914	<i>Eucalyptus camaldulensis</i>	River Red Gum	15-20	1050	20-30	Good	Mature	25-50	Active nesting by fauna; Amenity value/shade; Attractive landscape feature; Dominant landscape feature; Significant habitat - nests/hollows; Significant due to age/size;
1923	<i>Eucalyptus camaldulensis</i>	River Red Gum	15-20	1050	15-20	Good	Mature	15-25	Amenity value/shade; Attractive landscape feature; Dominant landscape feature; Significant due to age/size; Significant habitat - nests/hollows; Particularly old/venerable;
2004	<i>Angophora costata</i>	Smooth-barked Apple Myrtle	10-15	500	5-10	Good	Semi-Mature	15-25	Amenity value/shade; Active nesting by fauna;
2066	<i>Eucalyptus viminalis</i> ssp. <i>viminalis</i>	Manna Gum	<5	600	10-15	Dead	Mature	0	Significant habitat - nests/hollows;
2087	<i>Corymbia maculata</i>	Spotted Gum	15-20	500	5-10	Fair	Semi-Mature	<5	Amenity value/shade; Significant habitat - nests/hollows;
2151	<i>Eucalyptus leucoxylon</i> ssp. <i>megalocarpa</i>	Large-fruited Yellow Gum	5-10	450	5-10	Fair	Semi-Mature	15-25	Significant habitat - nests/hollows; Amenity value/shade;

2153	<i>Eucalyptus cladocalyx</i>	Sugar Gum	15-20	900	10-15	Good	Mature	15-25	Amenity value/shade; Particularly old/venerable; Significant due to age/size; Attractive landscape feature; Significant habitat - nests/hollows; Active nesting by fauna;
2191	<i>Eucalyptus ovata</i>	Swamp Gum	10-15	500	5-10	Poor	Mature	<5	Significant habitat - nests/hollows;
2252	<i>Eucalyptus camaldulensis</i>	River Red Gum	5-10	750	<5	Poor	Mature	<5	Significant habitat - nests/hollows;
2324	<i>Casuarina cunninghamiana</i>	River She-oak	15-20	700	5-10	Good	Mature	15-25	Amenity value/shade; Significant habitat - nests/hollows; Active nesting by fauna;
2434	<i>Corymbia maculata</i>	Spotted Gum	15-20	350	5-10	Poor	Semi-Mature	5-10	Amenity value/shade; Significant habitat - nests/hollows;
2454	<i>Melaleuca armillaris</i>	Bracelet Honey Myrtle	5-10	150	<5	Good	Juvenile	10-15	Active nesting by fauna;
2523	Dead Tree	Dead tree	10-15	600	5-10	Dead	Mature	0	Significant habitat - nests/hollows;
2527	<i>Eucalyptus camaldulensis</i>	River Red Gum	15-20	750	10-15	Good	Mature	25-50	Amenity value/shade; Attractive landscape feature; Active nesting by fauna;
2544	<i>Corymbia maculata</i>	Spotted Gum	10-15	350	5-10	Good	Semi-Mature	15-25	Amenity value/shade; Active nesting by fauna;
2603	<i>Eucalyptus camaldulensis</i>	River Red Gum	15-20	1000	10-15	Good	Mature	10-15	Particularly old/venerable; Amenity value/shade; Significant habitat - nests/hollows; Attractive landscape feature;
2653	<i>Melaleuca armillaris</i>	Bracelet Honey Myrtle	5-10	200	5-10	Good	Semi-Mature	10-15	Significant habitat - nests/hollows;
2661	<i>Eucalyptus camaldulensis</i>	River Red Gum	15-20	1000	15-20	Good	Mature	>50	Significant habitat - nests/hollows; Amenity value/shade; Attractive landscape feature; Dominant landscape feature; Significant due to age/size; Particularly old/venerable;
2678	<i>Hakea</i> sp.	Hakea	<5	150	5-10	Good	Semi-Mature	10-15	Attractive landscape feature; Significant habitat - nests/hollows;
2698	<i>Eucalyptus camaldulensis</i>	River Red Gum	15-20	450	5-10	Good	Semi-Mature	25-50	Amenity value/shade; Significant habitat - nests/hollows;
2756	<i>Eucalyptus camaldulensis</i>	River Red Gum	15-20	1000	15-20	Fair	Mature	>50	Amenity value/shade; Attractive landscape feature; Active feeding by fauna; Significant habitat - nests/hollows; Particularly old/venerable; Significant due to age/size; Dominant landscape feature; Active nesting by fauna;
2773	<i>Eucalyptus camaldulensis</i>	River Red Gum	15-20	1350	15-20	Fair	Mature	>50	Significant habitat - nests/hollows; Amenity value/shade; Particularly old/venerable; Significant due to age/size; Dominant landscape feature;
2807	<i>Eucalyptus melliodora</i>	Yellow Box	20-30	850	15-20	Good	Mature	>50	Amenity value/shade; Attractive landscape feature; Significant due to age/size; Significant habitat - nests/hollows; Dominant landscape feature;
2811	Dead Tree	Dead tree	5-10	600	<5	Dead	Semi-Mature	10-15	Active nesting by fauna; Significant habitat - nests/hollows;

2813	Dead Tree	Dead tree	5-10	600	<5	Dead	Semi-Mature	5-10	Significant habitat - nests/hollows;
2816	Eucalyptus camaldulensis	River Red Gum	10-15	950	5-10	Fair	Mature	10-15	Significant habitat - nests/hollows;
2832	Eucalyptus camaldulensis	River Red Gum	20-30	1200	20-30	Fair	Mature	25-50	Amenity value/shade; Attractive landscape feature; Significant habitat - nests/hollows; Dominant landscape feature; Particularly old/venerable; Significant due to age/size;
2949	Eucalyptus camaldulensis	River Red Gum	5-10	1200	5-10	Poor	Senescent	<5	Significant due to age/size; Significant habitat - nests/hollows; Particularly old/venerable;
2951	Eucalyptus nicholii	Narrow-leaved Black Peppermint	5-10	450	5-10	Good	Mature	15-25	Amenity value/shade; Active nesting by fauna;
2971	Eucalyptus camaldulensis	River Red Gum	5-10	1200	5-10	Poor	Senescent	<5	Active nesting by fauna; Significant habitat - nests/hollows; Significant due to age/size;
2975	Eucalyptus camaldulensis	River Red Gum	15-20	850	10-15	Fair	Mature	15-25	Significant habitat - nests/hollows; Amenity value/shade; Attractive landscape feature; Significant due to age/size;
3005	Corymbia maculata	Spotted Gum	15-20	550	10-15	Good	Semi-Mature	25-50	Active nesting by fauna; Significant due to age/size; Amenity value/shade; Attractive landscape feature;
3035	Eucalyptus camaldulensis	River Red Gum	20-30	650	10-15	Good	Mature	25-50	Active nesting by fauna; Attractive landscape feature; Protected species; Rare or localised distribution;
3057	Eucalyptus camaldulensis	River Red Gum	15-20	1000	15-20	Fair	Mature	25-50	Protected species; Rare or localised distribution; Significant habitat - nests/hollows; Amenity value/shade; Attractive landscape feature; Significant due to age/size; Active nesting by fauna;
3079	Eucalyptus camaldulensis	River Red Gum	15-20	1100	15-20	Good	Mature	25-50	Protected species; Rare or localised distribution; Amenity value/shade; Attractive landscape feature; Significant due to age/size; Active nesting by fauna;
3124	Eucalyptus camaldulensis	River Red Gum	20-30	1200	10-15	Fair	Mature	15-25	Rare or localised distribution; Protected species; Active nesting by fauna; Significant habitat - nests/hollows; Dominant landscape feature; Amenity value/shade; Attractive landscape feature; Significant due to age/size;
3129	Eucalyptus camaldulensis	River Red Gum	15-20	600	10-15	Fair	Mature	15-25	Protected species; Rare or localised distribution; Amenity value/shade; Attractive landscape feature; Active nesting by fauna;
3136	Eucalyptus camaldulensis	River Red Gum	10-15	900	15-20	Good	Mature	25-50	Protected species; Rare or localised distribution; Dominant landscape feature; Amenity value/shade; Attractive landscape feature; Significant due to age/size; Active nesting by fauna;
3182	Eucalyptus camaldulensis	River Red Gum	15-20	>1500	15-20	Fair	Mature	15-25	Rare or localised distribution; Protected species; Amenity value/shade; Attractive landscape feature; Significant due to

									age/size; Active nesting by fauna; Significant habitat - nests/hollows; Dominant landscape feature;
3282	<i>Eucalyptus melliodora</i>	Yellow Box	15-20	1100	15-20	Good	Mature	15-25	Amenity value/shade; Attractive landscape feature; Dominant landscape feature; Significant due to age/size; Active nesting by fauna; Significant habitat - nests/hollows;
3291	<i>Eucalyptus camaldulensis</i>	River Red Gum	15-20	650	10-15	Fair	Semi-Mature	15-25	Amenity value/shade; Attractive landscape feature; Significant habitat - nests/hollows;
3320	<i>Eucalyptus camaldulensis</i>	River Red Gum	10-15	750	10-15	Good	Mature	<5	Amenity value/shade; Attractive landscape feature; Significant habitat - nests/hollows; Rare or localised distribution; Protected species;
3324	<i>Eucalyptus grandis</i>	Flooded Gum	10-15	350	5-10	Good	Semi-Mature	25-50	Amenity value/shade; Attractive landscape feature; Active nesting by fauna;
3331	<i>Eucalyptus camaldulensis</i>	River Red Gum	10-15	1300	10-15	Fair	Mature	25-50	Dominant landscape feature; Significant habitat - nests/hollows; Amenity value/shade; Attractive landscape feature; Active nesting by fauna; Significant due to age/size;
3332	<i>Eucalyptus camaldulensis</i>	River Red Gum	10-15	1100	10-15	Fair	Mature	15-25	Significant habitat - nests/hollows; Dominant landscape feature; Amenity value/shade; Attractive landscape feature; Active nesting by fauna; Significant due to age/size;
3394	<i>Corymbia maculata</i>	Spotted Gum	15-20	450	10-15	Fair	Semi-Mature	15-25	Attractive landscape feature; Within group; Active nesting by fauna; Significant habitat - nests/hollows;
3514	<i>Eucalyptus botryoides</i>	Southern Mahogany	10-15	500	5-10	Good	Semi-Mature	15-25	Active nesting by fauna; Significant habitat - nests/hollows;
3543	<i>Eucalyptus camaldulensis</i>	River Red Gum	15-20	1500	5-10	Fair	Mature	15-25	Attractive landscape feature; Particularly old/venerable; Significant due to age/size; Active nesting by fauna; Significant habitat - nests/hollows;
3610	<i>Salix matsudana</i> 'Tortuosa'	Tortured Willow	5-10	400	5-10	Good	Semi-Mature	15-25	Active nesting by fauna; Amenity value/shade;
3637	<i>Eucalyptus camaldulensis</i>	River Red Gum	20-30	1300	15-20	Fair	Mature	>50	Protected species; Rare or localised distribution; Significant habitat - nests/hollows; Amenity value/shade; Attractive landscape feature; Particularly old/venerable; Active nesting by fauna;
3837	<i>Eucalyptus camaldulensis</i>	River Red Gum	15-20	1200	15-20	Fair	Mature	>50	Attractive landscape feature; Amenity value/shade; Active nesting by fauna; Significant habitat - nests/hollows; Dominant landscape feature; Significant due to age/size; Suitable to site conditions;
3850	Dead Tree	Dead tree	10-15	1300	5-10	Dead	Mature	5-10	Active nesting by fauna; Significant habitat - nests/hollows;

3876	Eucalyptus camaldulensis	River Red Gum	15-20	1050	10-15	Fair	Mature	25-50	Amenity value/shade; Attractive landscape feature; Significant habitat - nests/hollows; Dominant landscape feature; Significant due to age/size; Suitable to site conditions;
3924	Eucalyptus camaldulensis	River Red Gum	10-15	550	5-10	Fair	Semi-Mature	15-25	Amenity value/shade; Significant habitat - nests/hollows;
4001	Eucalyptus camaldulensis	River Red Gum	15-20	800	10-15	Good	Semi-Mature	25-50	Amenity value/shade; Attractive landscape feature; Significant habitat - nests/hollows;
4007	Eucalyptus cladocalyx	Sugar Gum	10-15	890	<5	Fair	Mature	<5	Active nesting by fauna; Significant habitat - nests/hollows; Amenity value/shade;
4009	Eucalyptus cladocalyx	Sugar Gum	10-15	890	10-15	Good	Mature	5-10	Amenity value/shade; Active nesting by fauna; Significant habitat - nests/hollows;
4010	Eucalyptus cladocalyx	Sugar Gum	20-30	1000	15-20	Good	Mature	15-25	Amenity value/shade; Attractive landscape feature; Significant due to age/size; Significant habitat - nests/hollows;
4044	Eucalyptus melliodora	Yellow Box	15-20	1100	5-10	Dead	Mature	0	Significant habitat - nests/hollows; Active nesting by fauna;
4075	Eucalyptus camaldulensis	River Red Gum	15-20	1100	15-20	Good	Mature	25-50	Potential heritage value; Amenity value/shade; Attractive landscape feature; Particularly old/venerable; Significant due to age/size; Significant habitat - nests/hollows;
4120	Eucalyptus camaldulensis	River Red Gum	15-20	1200	5-10	Fair	Senescent	10-15	Significant habitat - nests/hollows; Active nesting by fauna; Amenity value/shade; Particularly old/venerable;
4217	Eucalyptus melliodora	Yellow Box	10-15	850	10-15	Fair	Mature	15-25	Amenity value/shade; Attractive landscape feature; Significant due to age/size; Active nesting by fauna; Significant habitat - nests/hollows;
4449	Eucalyptus camaldulensis	River Red Gum	<5	300	5-10	Fair	Semi-Mature	<5	Significant habitat - nests/hollows; Active nesting by fauna;
4454	Eucalyptus camaldulensis	River Red Gum	15-20	1500	15-20	Good	Mature	25-50	Amenity value/shade; Attractive landscape feature; Significant due to age/size; Significant habitat - nests/hollows; Particularly old/venerable;
4463	Eucalyptus camaldulensis	River Red Gum	20-30	1250	15-20	Fair	Mature	10-15	Amenity value/shade; Attractive landscape feature; Significant habitat - nests/hollows; Active nesting by fauna; Dominant landscape feature; Particularly old/venerable; Significant due to age/size;
4477	Eucalyptus camaldulensis	River Red Gum	5-10	600	<5	Fair	Mature	<5	Significant habitat - nests/hollows; Curious/abnormal growths;
4478	Eucalyptus cladocalyx	Sugar Gum	15-20	700	10-15	Good	Mature	10-15	Significant habitat - nests/hollows;
5025	Eucalyptus camaldulensis	River Red Gum	15-20	1400	15-20	Good	Mature	>50	Amenity value/shade; Attractive landscape feature; Dominant landscape feature; Particularly old/venerable; Significant due to age/size; Active nesting by fauna; Significant habitat - nests/hollows;

5034	Dead Tree	Dead tree	10-15	550	<5	Dead	Semi-Mature	<5	Active nesting by fauna;
5037	Corymbia maculata	Spotted Gum	15-20	400	5-10	Good	Semi-Mature	5-10	Amenity value/shade; Active nesting by fauna;
5039	Corymbia maculata	Spotted Gum	15-20	450	10-15	Good	Semi-Mature	25-50	Active nesting by fauna; Attractive landscape feature; Amenity value/shade;
5063	Eucalyptus camaldulensis	River Red Gum	5-10	>1500	10-15	Dead	Mature	10-15	Active nesting by fauna; Significant habitat - nests/hollows; Particularly old/venerable;
5067	Eucalyptus camaldulensis	River Red Gum	5-10	800	5-10	Poor	Senescent	15-25	Significant habitat - nests/hollows; Significant due to age/size;
5071	Eucalyptus camaldulensis	River Red Gum	<5	1000	10-15	Dead	Mature	10-15	Significant habitat - nests/hollows; Significant due to age/size;
5083	Corymbia maculata	Spotted Gum	15-20	550	10-15	Good	Semi-Mature	5-10	Significant habitat - nests/hollows; Amenity value/shade;
5091	Eucalyptus camaldulensis	River Red Gum	10-15	950	15-20	Dead	Mature	0	Amenity value/shade; Attractive landscape feature; Significant habitat - nests/hollows; Significant due to age/size; Active nesting by fauna;
5092	Eucalyptus camaldulensis	River Red Gum	10-15	1150	15-20	Good	Mature	25-50	Amenity value/shade; Attractive landscape feature; Significant habitat - nests/hollows; Significant due to age/size; Active nesting by fauna;
5094	Eucalyptus camaldulensis	River Red Gum	15-20	1100	15-20	Good	Mature	>50	Significant habitat - nests/hollows; Amenity value/shade; Attractive landscape feature; Significant due to age/size;
5101	Eucalyptus camaldulensis	River Red Gum	15-20	1300	15-20	Good	Mature	>50	Amenity value/shade; Attractive landscape feature; Significant habitat - nests/hollows; Significant due to age/size;
5102	Eucalyptus camaldulensis	River Red Gum	10-15	850	15-20	Good	Mature	25-50	Amenity value/shade; Attractive landscape feature; Significant habitat - nests/hollows; Significant due to age/size;
5103	Eucalyptus camaldulensis	River Red Gum	15-20	1100	15-20	Good	Mature	>50	Amenity value/shade; Attractive landscape feature; Significant habitat - nests/hollows; Significant due to age/size;
5105	Eucalyptus camaldulensis	River Red Gum	15-20	1350	15-20	Good	Mature	25-50	Amenity value/shade; Attractive landscape feature; Significant habitat - nests/hollows; Particularly old/venerable; Significant due to age/size;
5118	Eucalyptus camaldulensis	River Red Gum	10-15	1100	15-20	Good	Mature	>50	Amenity value/shade; Significant habitat - nests/hollows; Particularly old/venerable; Significant due to age/size; Dominant landscape feature;
5119	Eucalyptus camaldulensis	River Red Gum	10-15	900	10-15	Fair	Mature	15-25	Amenity value/shade; Attractive landscape feature; Significant due to age/size; Significant habitat - nests/hollows;
5121	Eucalyptus botryoides	Southern Mahogany	15-20	900	10-15	Good	Mature	10-15	Significant habitat - nests/hollows;
5165	Eucalyptus camaldulensis	River Red Gum	5-10	900	5-10	Fair	Mature	25-50	Significant habitat - nests/hollows; Significant due to age/size; Suitable to site conditions;

5166	Eucalyptus camaldulensis	River Red Gum	10-15	900	10-15	Good	Semi-Mature	>50	Active feeding by fauna; Significant habitat - nests/hollows; Amenity value/shade; Attractive landscape feature; Suitable to site conditions;
5302	Eucalyptus camaldulensis	River Red Gum	10-15	1000	15-20	Good	Mature	>50	Amenity value/shade; Attractive landscape feature; Suitable to site conditions; Within group; Protected species; Significant habitat - nests/hollows;
5318	Eucalyptus camaldulensis	River Red Gum	10-15	750	10-15	Poor	Semi-Mature	10-15	Protected species; Amenity value/shade; Attractive landscape feature; Significant habitat - nests/hollows;
5400	Corymbia maculata	Spotted Gum	10-15	500	10-15	Good	Semi-Mature	>50	Active nesting by fauna; Attractive landscape feature; Amenity value/shade;
5599	Eucalyptus camaldulensis	River Red Gum	15-20	>1500	20-30	Good	Mature	>50	Attractive landscape feature; Protected species; Suitable to site conditions; Amenity value/shade; Dominant landscape feature; Curious/abnormal growths; Outstanding example of species; Particularly old/venerable; Significant due to age/size; Significant habitat - nests/hollows;
5707	Corymbia maculata	Spotted Gum	20-30	600	10-15	Good	Semi-Mature	25-50	Amenity value/shade; Attractive landscape feature; Active nesting by fauna;
5834	Ulmus procera	English Elm	10-15	600	10-15	Poor	Mature	5-10	Amenity value/shade; Significant habitat - nests/hollows;
5885	Hesperocyparis macrocarpa	Monterey Cypress	10-15	1400	10-15	Dead	Mature	<5	Significant habitat - nests/hollows; Active nesting by fauna;
5892	Eucalyptus cladocalyx	Sugar Gum	20-30	750	15-20	Good	Mature	15-25	Amenity value/shade; Attractive landscape feature; Significant habitat - nests/hollows; Significant due to age/size;
5894	Eucalyptus camaldulensis	River Red Gum	15-20	1050	10-15	Fair	Mature	15-25	Active nesting by fauna; Significant habitat - nests/hollows; Amenity value/shade; Attractive landscape feature; Dominant landscape feature;
5922	Eucalyptus camaldulensis	River Red Gum	10-15	600	10-15	Fair	Mature	25-50	Amenity value/shade; Attractive landscape feature; Suitable to site conditions; Protected species; Significant habitat - nests/hollows;
5928	Dead Tree	Dead tree	5-10	600	<5	Dead	Mature	0	Significant habitat - nests/hollows;
5936	Eucalyptus cladocalyx	Sugar Gum	10-15	1500	15-20	Fair	Mature	25-50	Within group; Amenity value/shade; Attractive landscape feature; Significant due to age/size; Significant habitat - nests/hollows;
5937	Eucalyptus cladocalyx	Sugar Gum	5-10	1250	5-10	Fair	Mature	25-50	Within group; Amenity value/shade; Attractive landscape feature; Significant due to age/size; Significant habitat - nests/hollows;
5938	Eucalyptus cladocalyx	Sugar Gum	10-15	1000	10-15	Fair	Mature	25-50	Significant habitat - nests/hollows; Within group; Amenity value/shade; Attractive landscape feature; Significant due to age/size;

5939	Eucalyptus cladocalyx	Sugar Gum	5-10	800	15-20	Fair	Mature	25-50	Significant habitat - nests/hollows; Within group; Amenity value/shade; Attractive landscape feature;
5940	Eucalyptus cladocalyx	Sugar Gum	20-30	1400	15-20	Fair	Mature	25-50	Significant due to age/size; Significant habitat - nests/hollows; Within group; Amenity value/shade; Attractive landscape feature;
5941	Eucalyptus cladocalyx	Sugar Gum	5-10	800	15-20	Poor	Mature	5-10	Significant habitat - nests/hollows; Within group; Amenity value/shade; Attractive landscape feature;
5943	Dead Tree	Dead tree	15-20	900	10-15	Dead	Mature	0	Significant habitat - nests/hollows; Within group; Significant due to age/size;
5947	Eucalyptus cladocalyx	Sugar Gum	10-15	900	10-15	Good	Mature	25-50	Amenity value/shade; Active nesting by fauna; Attractive landscape feature; Within group;
5980	Eucalyptus camaldulensis	River Red Gum	20-30	1100	15-20	Fair	Mature	25-50	Significant habitat - nests/hollows; Amenity value/shade; Attractive landscape feature;
5982	Eucalyptus cladocalyx	Sugar Gum	20-30	1250	20-30	Fair	Mature	5-10	Amenity value/shade; Attractive landscape feature; Significant habitat - nests/hollows;
5983	Eucalyptus cladocalyx	Sugar Gum	15-20	1100	5-10	Fair	Mature	5-10	Amenity value/shade; Attractive landscape feature; Significant habitat - nests/hollows;
5988	Eucalyptus cladocalyx	Sugar Gum	10-15	800	5-10	Good	Mature	5-10	Amenity value/shade; Attractive landscape feature; Significant habitat - nests/hollows;
5989	Eucalyptus cladocalyx	Sugar Gum	10-15	600	5-10	Good	Mature	5-10	Amenity value/shade; Attractive landscape feature; Significant habitat - nests/hollows;
5990	Eucalyptus cladocalyx	Sugar Gum	10-15	900	5-10	Good	Mature	5-10	Amenity value/shade; Attractive landscape feature; Significant habitat - nests/hollows;
5991	Eucalyptus cladocalyx	Sugar Gum	5-10	400	5-10	Good	Semi-Mature	5-10	Amenity value/shade; Attractive landscape feature; Significant habitat - nests/hollows;
5992	Eucalyptus cladocalyx	Sugar Gum	15-20	850	10-15	Good	Mature	5-10	Amenity value/shade; Attractive landscape feature; Significant habitat - nests/hollows;
5995	Eucalyptus cladocalyx	Sugar Gum	15-20	700	5-10	Fair	Mature	5-10	Significant habitat - nests/hollows; Amenity value/shade;
5999	Eucalyptus cladocalyx	Sugar Gum	20-30	750	10-15	Good	Semi-Mature	5-10	Significant habitat - nests/hollows; Amenity value/shade;
6000	Eucalyptus cladocalyx	Sugar Gum	20-30	800	10-15	Good	Semi-Mature	10-15	Significant habitat - nests/hollows; Amenity value/shade; Active nesting by fauna;
6001	Eucalyptus cladocalyx	Sugar Gum	20-30	1100	10-15	Good	Mature	10-15	Significant habitat - nests/hollows; Amenity value/shade;
6003	Eucalyptus camaldulensis	River Red Gum	15-20	1400	15-20	Good	Mature	15-25	Amenity value/shade; Attractive landscape feature; Significant due to age/size; Significant habitat - nests/hollows;
6020	Eucalyptus camaldulensis	River Red Gum	20-30	850	10-15	Fair	Mature	10-15	Amenity value/shade; Attractive landscape feature; Significant habitat - nests/hollows; Dominant landscape feature;

6022	Eucalyptus cladocalyx	Sugar Gum	20-30	1250	20-30	Good	Mature	15-25	Amenity value/shade; Attractive landscape feature; Dominant landscape feature; Significant due to age/size; Significant habitat - nests/hollows;
6057	Eucalyptus camaldulensis	River Red Gum	10-15	850	5-10	Poor	Mature	10-15	Active nesting by fauna; Significant habitat - nests/hollows; Amenity value/shade;
6094	Eucalyptus camaldulensis	River Red Gum	20-30	1300	15-20	Good	Mature	25-50	Amenity value/shade; Attractive landscape feature; Dominant landscape feature; Significant due to age/size; Significant habitat - nests/hollows;
6102	Eucalyptus camaldulensis	River Red Gum	15-20	1100	10-15	Good	Mature	25-50	Significant habitat - nests/hollows; Amenity value/shade; Attractive landscape feature; Significant due to age/size;
6109	Eucalyptus camaldulensis	River Red Gum	20-30	1200	15-20	Good	Mature	25-50	Significant due to age/size; Significant habitat - nests/hollows; Amenity value/shade; Attractive landscape feature;
6130	Eucalyptus cladocalyx	Sugar Gum	20-30	1150	15-20	Fair	Mature	5-10	Amenity value/shade; Significant habitat - nests/hollows; Attractive landscape feature; Significant due to age/size;
6133	Eucalyptus cladocalyx	Sugar Gum	10-15	800	5-10	Fair	Mature	5-10	Significant habitat - nests/hollows; Amenity value/shade;
6142	Eucalyptus camaldulensis	River Red Gum	15-20	1050	15-20	Fair	Mature	15-25	Significant habitat - nests/hollows; Amenity value/shade; Attractive landscape feature; Significant due to age/size;
6170	Eucalyptus botryoides	Southern Mahogany	10-15	550	10-15	Good	Semi-Mature	15-25	Amenity value/shade; Active nesting by fauna; Attractive landscape feature;
6261	Eucalyptus botryoides	Southern Mahogany	10-15	400	5-10	Good	Semi-Mature	25-50	Active nesting by fauna; Amenity value/shade; Attractive landscape feature;
6279	Eucalyptus camaldulensis	River Red Gum	10-15	550	5-10	Good	Semi-Mature	15-25	Active nesting by fauna; Amenity value/shade; Attractive landscape feature;
6562	Eucalyptus camaldulensis	River Red Gum	10-15	1150	15-20	Good	Mature	>50	Amenity value/shade; Attractive landscape feature; Suitable to site conditions; Significant due to age/size; Outstanding example of species; Active nesting by fauna; Dominant landscape feature; Significant habitat - nests/hollows;
6594	Eucalyptus camaldulensis	River Red Gum	15-20	1100	15-20	Good	Mature	>50	Amenity value/shade; Attractive landscape feature; Suitable to site conditions; Significant habitat - nests/hollows; Outstanding example of species; Dominant landscape feature; Curious/abnormal growths; Particularly old/venerable; Significant due to age/size;
6719	Dead Tree	Dead tree	10-15	1300	15-20	Dead	Mature	0	Significant habitat - nests/hollows; Curious/abnormal growths; Dominant landscape feature; Significant due to age/size; Particularly old/venerable; Amenity value/shade; Attractive landscape feature;
6720	Dead Tree	Dead tree	10-15	1200	5-10	Dead	Mature	0	Amenity value/shade; Attractive landscape feature; Significant habitat - nests/hollows; Curious/abnormal growths; Dominant

									landscape feature; Significant due to age/size; Particularly old/venerable;
6726	Dead Tree	Dead tree	5-10	400	5-10	Dead	Semi-Mature	0	Significant habitat - nests/hollows;
6727	Dead Tree	Dead tree	5-10	400	<5	Dead	Semi-Mature	0	Significant habitat - nests/hollows;
6731	Dead Tree	Dead tree	10-15	400	5-10	Dead	Semi-Mature	25-50	Significant habitat - nests/hollows;
6773	Dead Tree	Dead tree	10-15	400	<5	Dead	Semi-Mature	0	Significant habitat - nests/hollows;
6788	Dead Tree	Dead tree	10-15	650	10-15	Dead	Semi-Mature	0	Significant habitat - nests/hollows;
6835	Eucalyptus camaldulensis	River Red Gum	15-20	1100	15-20	Good	Mature	>50	Amenity value/shade; Attractive landscape feature; Suitable to site conditions; Significant due to age/size; Particularly old/venerable; Significant habitat - nests/hollows; Curious/abnormal growths; Dominant landscape feature;
7145	Dead Tree	Dead tree	10-15	500	5-10	Dead	Semi-Mature	0	Significant habitat - nests/hollows;
7151	Dead Tree	Dead tree	5-10	400	5-10	Dead	Semi-Mature	0	Significant habitat - nests/hollows;
7163	Eucalyptus cladocalyx	Sugar Gum	10-15	750	10-15	Good	Mature	15-25	Attractive landscape feature; Amenity value/shade; Significant habitat - nests/hollows;
7164	Eucalyptus cladocalyx	Sugar Gum	15-20	800	15-20	Good	Mature	15-25	Significant due to age/size; Attractive landscape feature; Amenity value/shade; Significant habitat - nests/hollows;
7165	Eucalyptus cladocalyx	Sugar Gum	10-15	700	10-15	Good	Mature	15-25	Attractive landscape feature; Amenity value/shade; Significant habitat - nests/hollows;
7166	Eucalyptus cladocalyx	Sugar Gum	15-20	650	10-15	Good	Semi-Mature	15-25	Attractive landscape feature; Amenity value/shade; Significant habitat - nests/hollows;
7168	Eucalyptus cladocalyx	Sugar Gum	5-10	600	10-15	Fair	Semi-Mature	10-15	Significant habitat - nests/hollows; Amenity value/shade;
7169	Eucalyptus cladocalyx	Sugar Gum	5-10	650	5-10	Fair	Semi-Mature	10-15	Amenity value/shade; Significant habitat - nests/hollows;
7170	Eucalyptus cladocalyx	Sugar Gum	15-20	750	10-15	Fair	Mature	15-25	Amenity value/shade; Significant habitat - nests/hollows;
7171	Eucalyptus cladocalyx	Sugar Gum	10-15	650	5-10	Fair	Semi-Mature	10-15	Amenity value/shade; Significant habitat - nests/hollows;
7172	Eucalyptus cladocalyx	Sugar Gum	15-20	650	5-10	Fair	Semi-Mature	10-15	Amenity value/shade; Significant habitat - nests/hollows;
7173	Dead Tree	Dead tree	10-15	650	10-15	Poor	Semi-Mature	0	Amenity value/shade; Significant habitat - nests/hollows;
7185	Eucalyptus cladocalyx	Sugar Gum	15-20	600	10-15	Good	Semi-Mature	15-25	Amenity value/shade; Attractive landscape feature; Significant habitat - nests/hollows;
7190	Eucalyptus cladocalyx	Sugar Gum	10-15	600	5-10	Fair	Semi-Mature	10-15	Amenity value/shade; Attractive landscape feature; Significant habitat - nests/hollows;
7191	Dead Tree	Dead tree	<5	400	<5	Dead	Semi-Mature	0	Significant habitat - nests/hollows;
7192	Dead Tree	Dead tree	<5	500	<5	Dead	Semi-Mature	0	Significant habitat - nests/hollows;

7205	Dead Tree	Dead tree	15-20	600	10-15	Dead	Semi-Mature	0	Significant habitat - nests/hollows;
7303	Eucalyptus camaldulensis	River Red Gum	15-20	1250	5-10	Fair	Senescent	15-25	Amenity value/shade; Attractive landscape feature; Particularly old/venerable; Significant due to age/size; Significant habitat - nests/hollows;
7589	Eucalyptus cladocalyx	Sugar Gum	20-30	1270	15-20	Good	Mature	10-15	Significant habitat - nests/hollows; Active nesting by fauna; Significant due to age/size;
7590	Eucalyptus cladocalyx	Sugar Gum	5-10	700	5-10	Good	Mature	10-15	Significant habitat - nests/hollows; Active nesting by fauna;
7591	Eucalyptus cladocalyx	Sugar Gum	20-30	1100	15-20	Good	Mature	10-15	Significant habitat - nests/hollows; Active nesting by fauna; Significant due to age/size;
7592	Eucalyptus cladocalyx	Sugar Gum	15-20	1030	15-20	Good	Mature	10-15	Significant habitat - nests/hollows; Active nesting by fauna; Significant due to age/size;
7593	Eucalyptus cladocalyx	Sugar Gum	20-30	1010	15-20	Good	Mature	10-15	Significant habitat - nests/hollows; Active nesting by fauna; Significant due to age/size;
7594	Eucalyptus cladocalyx	Sugar Gum	5-10	900	5-10	Good	Semi-Mature	<5	Significant habitat - nests/hollows; Active nesting by fauna;
7595	Eucalyptus cladocalyx	Sugar Gum	20-30	1010	10-15	Good	Mature	10-15	Significant habitat - nests/hollows; Active nesting by fauna; Significant due to age/size;
7596	Eucalyptus cladocalyx	Sugar Gum	15-20	830	10-15	Good	Mature	10-15	Significant habitat - nests/hollows; Active nesting by fauna; Significant due to age/size;
7597	Eucalyptus cladocalyx	Sugar Gum	20-30	1310	15-20	Good	Mature	10-15	Significant habitat - nests/hollows; Active nesting by fauna; Significant due to age/size; Particularly old/venerable;
7696	Pinus canariensis	Canary Island Pine	10-15	650	5-10	Fair	Mature	10-15	Significant habitat - nests/hollows;
7697	Pinus canariensis	Canary Island Pine	10-15	650	5-10	Good	Semi-Mature	15-25	Significant habitat - nests/hollows;
7756	Eucalyptus camaldulensis	River Red Gum	15-20	1720	15-20	Fair	Mature	25-50	Active nesting by fauna; Significant habitat - nests/hollows; Dominant landscape feature; Outstanding example of species; Particularly old/venerable; Significant due to age/size; Suitable to site conditions;
7757	Eucalyptus camaldulensis	River Red Gum	15-20	1300	10-15	Good	Mature	25-50	Dominant landscape feature; Particularly old/venerable; Significant due to age/size; Active nesting by fauna; Significant habitat - nests/hollows; Outstanding example of species;
7758	Eucalyptus camaldulensis	River Red Gum	10-15	750	10-15	Good	Mature	25-50	Significant habitat - nests/hollows; Significant due to age/size; Dominant landscape feature;
7839	Eucalyptus camaldulensis	River Red Gum	15-20	1100	20-30	Poor	Mature	>50	Significant habitat - nests/hollows; Amenity value/shade; Dominant landscape feature; Particularly old/venerable; Significant due to age/size;
7900	Eucalyptus camaldulensis	River Red Gum	15-20	1000	15-20	Fair	Mature	25-50	Amenity value/shade; Attractive landscape feature; Significant habitat - nests/hollows;

7901	<i>Eucalyptus camaldulensis</i>	River Red Gum	10-15	730	10-15	Fair	Mature	15-25	Amenity value/shade; Attractive landscape feature; Significant habitat - nests/hollows;
7910	<i>Eucalyptus camaldulensis</i>	River Red Gum	20-30	1280	15-20	Good	Mature	25-50	Amenity value/shade; Attractive landscape feature; Particularly old/venerable; Significant due to age/size; Significant habitat - nests/hollows; Active nesting by fauna;
7921	<i>Eucalyptus viminalis</i> ssp. <i>viminalis</i>	Manna Gum	20-30	1640	20-30	Good	Mature	25-50	Significant habitat - nests/hollows; Dominant landscape feature; Significant due to age/size;
7927	<i>Ulmus</i> sp.	Elm	15-20	1050	15-20	Dead	Mature	0	Significant due to age/size; Significant habitat - nests/hollows;
7947	<i>Eucalyptus camaldulensis</i>	River Red Gum	20-30	1780	20-30	Fair	Mature	>50	Significant habitat - nests/hollows; Amenity value/shade; Dominant landscape feature; Outstanding example of species; Particularly old/venerable; Significant due to age/size;
8093	<i>Eucalyptus sideroxylon</i>	Red Ironbark	10-15	760	10-15	Good	Mature	25-50	Amenity value/shade; Attractive landscape feature; Significant habitat - nests/hollows;
8130	<i>Eucalyptus camaldulensis</i>	River Red Gum	10-15	1431	15-20	Good	Mature	>50	Amenity value/shade; Attractive landscape feature; Dominant landscape feature; Particularly old/venerable; Significant due to age/size; Significant habitat - nests/hollows; Active nesting by fauna;
9001	<i>Eucalyptus cladocalyx</i>	Sugar Gum	5-10	610	5-10	Fair	Semi-Mature	<5	Significant habitat - nests/hollows;