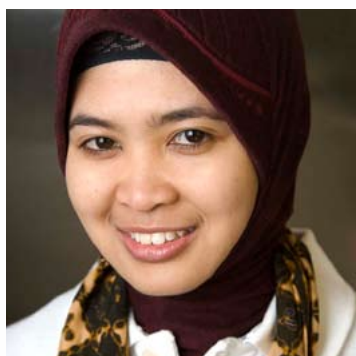
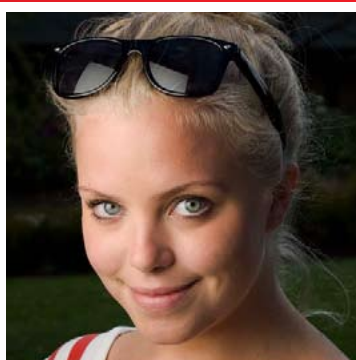


Selamat datang ke La Trobe University!

Informasi khusus untuk mahasiswa AusAID ADS



Australia

► latrobe.edu.au/international

Melbourne | Bendigo | Albury-Wodonga

Pesan dari Wakil Rektor



Profesor Paul Johnson
Wakil Rektor dan Pimpinan

Di La Trobe University, kami bertujuan untuk menciptakan peluang tak terbatas bagi para siswa, staf dan masyarakat, melalui pendidikan dan riset.

Dengan senang hati saya ingin mengundang Anda untuk bergabung bersama La Trobe University, salah satu universitas terkemuka di Australia yang memiliki reputasi internasional atas keunggulan akademik dan inovasi. Sasaran kami adalah mewujudkan pengajaran, pembelajaran dan riset yang bertanggung jawab sosial, inklusif, relevan, bahkan radikal.

Untuk membantu para siswa kami mencapai kesuksesan akademik, kami menyediakan salah satu tingkat layanan dan fasilitas yang terbaik di Australia. Anda akan dapat membacanya dalam publikasi ini. Standar akademik di La Trobe University sangat tinggi, dan program pengajaran dan risetnya dirancang khusus untuk memberikan siswa sebuah pendidikan yang menstimulasi intelektual, serta untuk memenuhi kebutuhan profesi, industri dan masyarakat di Australia dan luar negeri.

La Trobe University mengukur keberhasilannya berdasarkan kualitas lulusannya, dan berdasarkan kemampuan mereka dalam menggunakan pengetahuan, ketrampilan dan kualitas kepemimpinan mereka untuk memberikan manfaat bagi diri mereka sendiri, serta bagi negara dan masyarakat. Secara konsisten, para siswa kami menunjukkan bahwa kualifikasi La Trobe University telah diakui di dunia internasional, dan memberi jalan untuk mendapatkan karir global yang sangat sukses. Komunitas La Trobe University memberi segala peluang untuk memastikan bahwa waktu Anda di Universitas akan sangat memuaskan dan mampu menstimulasi intelektual Anda.

“Saat-saat terbaik sewaktu saya di sini adalah beragamnya staf dan siswa yang saya temui, dan dari merekalah saya belajar begitu banyak hal tentang dunia ini. Selain itu, aktif dalam begitu banyak kegiatan kampus semakin memperkuat ketrampilan saya dalam bersosialisasi.”



Daniel A. W. Waluyo, Indonesia
Master of Adult Education



Lima alasan bagus untuk studi di La Trobe University

1

Anda akan studi di sebuah Universitas dengan reputasi dan jaringan industri yang unggul

- La Trobe University menduduki peringkat di antara 3 Universitas Terbaik di Negara Bagian Victoria untuk tahun 2007, oleh Indeks Jiao Tong University Shanghai.
- Hubungan yang kuat di industri, termasuk sebuah Microsoft Centre dan Research and Development Park di dalam kampus; serta Biosciences Research Centre senilai A\$230 juta.
- Baru-baru ini mendapat pendanaan senilai A\$123,7 juta dari Pemerintah Federal untuk membangun La Trobe Institute for Molecular Science di Melbourne dan La Trobe Rural Health School di Bendigo.

2

Kami menyiapkan Anda untuk sukses setelah lulus

- Kami menyediakan layanan karir yang ekstensif untuk membantu para lulusan kami agar sukses.
- Bidang studi kami dikembangkan sesuai dengan tuntutan industri.

3

Anda akan mendapatkan pengalaman belajar yang berkualitas tinggi sekaligus menggairahkan

- Para staf akademik kami sangat berdedikasi, mudah dihubungi dan ramah. Mereka mempunyai reputasi yang tinggi, dan sering mendapatkan penghargaan atas hasil riset mereka.
- Pengajaran di La Trobe dilengkapi dengan riset-riset terbaru.
- Kami mempunyai hubungan riset dengan lebih dari 80 universitas di seluruh dunia, dan merupakan anggota dari Innovative Research Universities (IRU) Australia: www.irua.edu.au

4

Kami berkomitmen untuk memberi Anda sebuah pendidikan global

- Kami memiliki jaringan global untuk pengajaran, pertukaran siswa, serta pengembangan profesional dan internasional.
- La Trobe University merupakan anggota pendiri International Network of Universities (INU), sebuah konsorsium universitas-universitas yang berkomitmen dalam internasionalisasi pendidikan: www.inunis.net

5

Anda akan merasa nyaman dan betah dalam komunitas kampus kami

- Komunitas kampus La Trobe yang beragam terdiri dari sekitar 2.700 staf dan 26.500 siswa, termasuk lebih dari 4.900 siswa internasional dari 90 negara lebih.
- Siswa dapat bergabung dalam berbagai jenis klub dan organisasi, agar dapat memanfaatkan sepenuhnya waktu mereka di La Trobe University.
- Kami terkenal atas layanan pendukung kami bagi para siswa internasional, termasuk bantuan dalam ketrampilan akademik dan bahasa Inggris, serta layanan gratis penjemputan di bandara.

Location

La Trobe University delivers courses to international students at three campuses across Victoria – in the capital city of Melbourne and in the regional cities of Bendigo and Albury-Wodonga. Victoria has a population of 5.2 million and offers magnificent coastlines, attractive beaches, snowfields, rainforests and beautiful national parks.

Melbourne

Melbourne has something for everyone. The city is located in the south-eastern part of Australia, only a seven-hour flight from Jakarta and 5.5 hour flight from Denpasar. Regarded as the cultural capital of Australia, Melbourne was voted the world's most liveable city for three years (London-based Economist Intelligence Unit 2002 – 2004). Travelling in and around Melbourne is easy with the public transport network including buses, trams and trains.

With a population of approximately 3.7 million people, originating from 153 different countries, Melbourne is famous for its multiculturalism. This is displayed in the diversity of the food and multicultural events in the city. Areas in Melbourne specialise in food and goods from different parts of the world, including the Middle East, China, India, Italy and Vietnam.



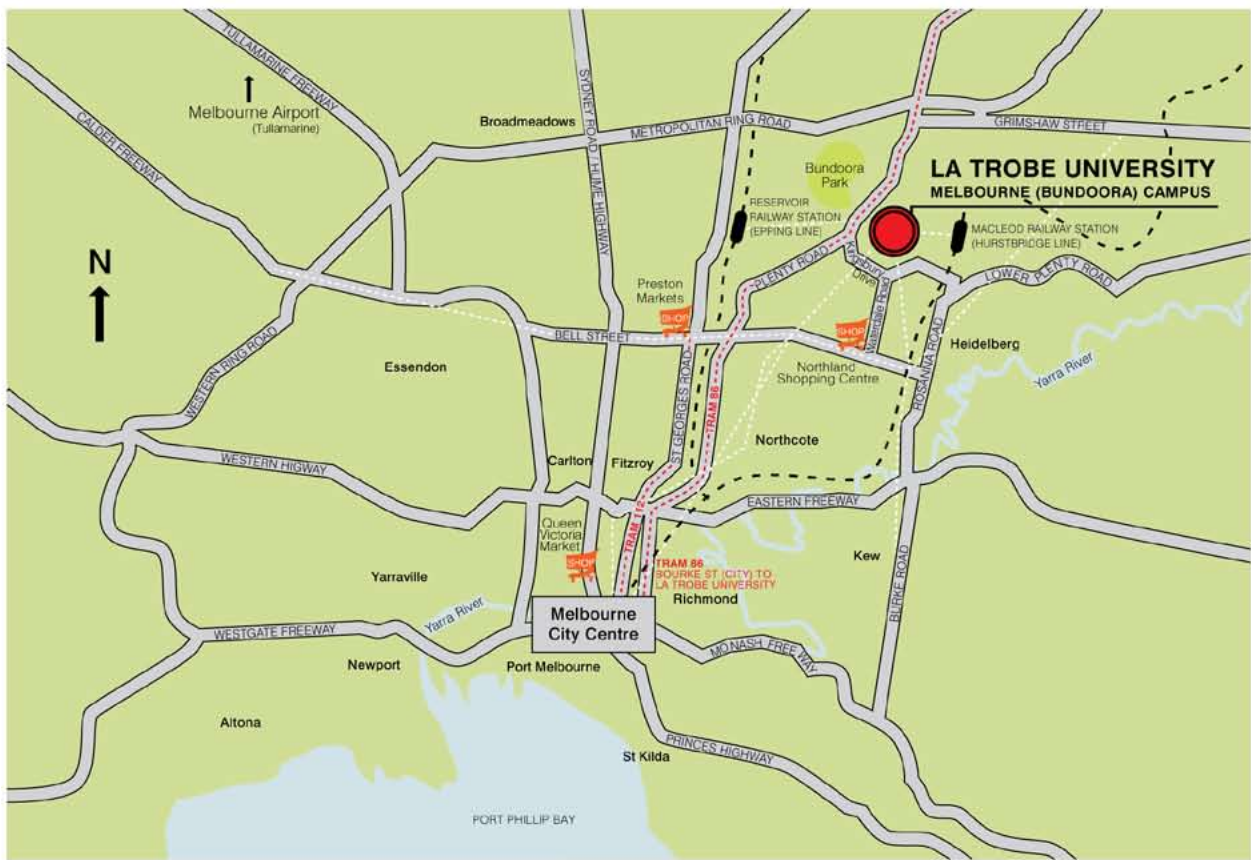
The Australian Open in Melbourne



AUSTRALIA



VICTORIA



	La Trobe Campus		Main Road		Train Line
	Shopping Centre		Bus Line		Tram Line



Campuses

All our campuses offer strong campus communities and excellent accommodation choices.



Melbourne (Bundoora) campus

Distance to Melbourne (city):
14km (8.7 miles).

Student population: 17,000

La Trobe's largest campus and one of the most attractive university campuses in Australia, the Melbourne (Bundoora) campus covers 232 hectares (573 acres) of stunning parkland with its own waterways and a wildlife sanctuary. The on-campus learning facilities are excellent, with up-to-date lecture theatres, wireless internet facilities, an impressive library and research laboratories.

The Melbourne (Bundoora) campus is a complete campus community with on-campus accommodation and a full range of services including a bookshop, hairdresser, travel agent, weekly market, optometrist, banks, bakery, post office, cinema, convenience store and child care facilities. Restaurants and cafes on campus provide a range of food including modern Australian, halal, European, Chinese, Japanese, Indian and vegetarian.



Bendigo campus

Distance to Melbourne (city):
150km (93 miles).

Student population: 3,900

The Bendigo campus is the University's second largest campus. It is situated on 33 hectares (81.5 acres) of attractive bushland, three kilometres from the Bendigo city centre.

The Bendigo campus is a great place to meet people and establish new friendships. The size of the campus makes it easy to find your way around, get to know people and feel part of the university community. Staff and students at the Bendigo campus have access to a full range of services and facilities.

Average temperatures for all campuses

Average summer temperature:
15°C – 27°C (59°F – 80°F)

Average winter temperature:
9°C – 15°C (48°F – 59°F)



Albury-Wodonga campus

Distance to Melbourne (city):
300km (186 miles)

Distance to Canberra:

350km (218 miles)

Distance to Sydney:

560km (348 miles)

Student Population: 900

La Trobe University's Albury-Wodonga campus is a major regional campus. Many students attending the campus find that its smaller size and close-knit community provide opportunities to develop lasting friendships with other students. It also offers international students more personalised attention and a safe, supportive environment for developing English language proficiency and for academic study.

Learning facilities at the Albury-Wodonga campus are modern and offer excellent lecture theatres, sophisticated practice laboratories in the Health Sciences building and fully-equipped computer facilities and wireless internet access.



“My experience in Australia is giving me a better sense of how things work in a developed country. I feel that by studying here I am developing my way of thinking and I will be able to implement my learning back home in Indonesia.”



Mohamad Fahmi, Indonesia
PhD in Economics, Recipient of an AUSAID scholarship

The La Trobe University lifestyle

Clubs and societies

At La Trobe there are several clubs and societies that cater to a range of sport, recreational, academic, social and cultural pursuits. Students can also choose to join any number of special interest groups or professional associations. Sporting clubs provide a great social atmosphere for students.



Asosiasi Siswa Indonesia

Asosiasi Siswa Indonesia yang bernama KILAT merupakan perkumpulan yang bertujuan memberikan ruang bagi para siswa Indonesia untuk saling berbagi pengalaman hidup dan pengalaman belajar mereka. KILAT berfungsi sebagai titik hubung antar siswa Indonesia di La Trobe dan dengan asosiasi sejenis di sekitar Melbourne, serta aktif dalam mempromosikan citra baik Indonesia di mata teman-teman internasional.

Asosiasi ini mempunyai grup Facebook, sehingga para anggotanya selalu dapat saling berhubungan. Grup ini terbuka bagi semua orang yang mau bergabung, yaitu di [facebook.com/group.php?gid=20164665389](https://www.facebook.com/group.php?gid=20164665389)



Sports and recreation

All La Trobe campuses offer extensive sports and recreation facilities, including:

- The University Sports Centre at the Melbourne (Bundoora) campus, which provides an indoor heated swimming pool, gymnasium, group exercise classes, basketball, netball, volleyball, indoor soccer, table tennis facilities as well as tennis, squash and badminton courts. Numerous programs are available ranging from yoga and Pilates to dancing (belly, hip-hop, ballet, jazz and ballroom), plus accredited first-aid training.
- A world-class athletics facility at the Bendigo campus utilised during the 2006 Commonwealth Games, plus a Sports and Fitness Centre with a weights room, group fitness, boxing circuit and a sports hall equipped for basketball, volleyball, badminton, netball, table tennis and indoor soccer.
- At the Albury-Wodonga campus, an on-campus gymnasium, lawn bowls, basketball courts, table tennis and pool tables. Off-campus students have community access to squash courts, golf courses, gymnasiums, swimming pools, sports fields and beautiful parks.
- All campuses offer intervarsity and community sports.

Services and Facilities

International student support services

La Trobe University provides many specialised support services to help students adjust to living in Australia. We understand the difficulties international students might face in adjusting to a new culture and landscape, making new friends and studying successfully, all at the same time. Our staff will ensure that you don't have to cope with this all on your own. Services provided include:

- Assistance with visa, health insurance and temporary accommodation arrangements and pre-departure information
- A free airport or railway reception service
- A Welcome Festival Orientation program and an Arrival Guide
- Advice and support on personal, financial or cultural issues, transition to life in Australia and study at La Trobe University
- Social activities and programs varying from campus to campus e.g. day trips, a Weekend Homestay and a language and cultural exchange program.

For more information about support services at La Trobe University, please go to:

👉 latrobe.edu.au/international/life/supportservices

For more information about student activities, please go to:

👉 latrobe.edu.au/international/life/activities

For more information on airport transfer please go to:

👉 latrobe.edu.au/international/predeparture/leaving

Career support & career experience

Our professionally-qualified careers consultants assist students in developing their career goals, creating opportunities to build their job-seeking skills and preparing them for the workforce. For more information, please go to: 👉 latrobe.edu.au/careers

Many courses at La Trobe University offer practical, industry-related experience in the form of internships, industry-based learning, placement and career management programs.

Library facilities

The University Library is the gateway to scholarly information for all staff and students at La Trobe. It operates as one service across all campuses, housing a collection of more than 2 million books, journals, international newspapers and audiovisual resources. More than the same amount of information is provided through electronic databases, e-books and other online resources. For more information, please go to:

👉 latrobe.edu.au/library

Counselling

La Trobe University recognises that personal, interpersonal and environmental factors affect learning. La Trobe University offers counselling services that are free of charge and confidential.

👉 latrobe.edu.au/counselling

Equality and diversity centre

Support can be provided to students who have a disability, mental health issue or a medical condition, and to Deaf students and students with hearing impairment.

👉 latrobe.edu.au/equality

Academic language and learning support

All La Trobe University campuses work with international students to develop their English language skills. Students can develop their language and their understanding of academic conventions through individual consultations, small-group workshops and online resources.

👉 latrobe.edu.au/learning




Accommodation

There is a wide variety of on-campus, off-campus accommodation and temporary accommodation available to suit your particular needs, including single room accommodation, board in exchange, full board, share accommodation and private rental.

For more information about on-campus, off-campus and temporary accommodation please go to: latrobe.edu.au/accommodation



“I like everything about La Trobe University, especially its beautiful campus, with the moat and the amazing gardens; it stands in no comparison with other university campuses.”

 Inge Dhamanti Irawan, Indonesia
Master of Public Health, Australian Government scholarship

Bringing your family

It is a visa requirement that school-aged children (primary or secondary school age) are enrolled in school. Consult the Victorian Department of Education website for a list of schools that admit international students:

👉 study.vic.gov.au/Intstu/default.htm

As an Australian Government sponsored student (AusAID), tuition fees for your children are the same as for Australian citizens.

Child-care facilities, providing both full-time and sessional care, are available and are located on or near our Melbourne (Bundoora), Albury-Wodonga and Bendigo campuses.

Melbourne (Bundoora) Children's Centre:

👉 latrobe.edu.au/child/

Bendigo Books and Blocks Childcare:

👉 booksandblockschildcare.com.au

Albury-Wodonga Kids on Campus:

👉 latrobe.edu.au/aw/childcarecentre

Religious Facilities

Muslim students

La Trobe University offers a number of services to Muslim students. Muslim prayer facilities are available at all campus. The Melbourne (Bundoora) and Bendigo campuses have separate prayer rooms and ablution facilities for men and woman. There are also two mosques located close to the Melbourne (Bundoora) campus, in Heidelberg and in Preston.

La Trobe University Islamic Society (LTUIS)

The La Trobe University Islamic Society is an organisation run by students, for students, and the aim of the organisation is to assist Muslim students at the University. The services that LTUIS provide include:

- Large scale functions: Lectures based on Islamic topics
- Weekly Islamic lessons
- Congregational Jumu'ah Prayers
- Islamic Awareness Week
- Ramadan activities (including nightly Iftar Programs)
- Sporting Events
- Joint events with other university Islamic Societies
- Camping and outdoor activities

Contact details are available in the LTUIS Guide.

For more information, go to:

👉 latrobe.edu.au/international/life/supportservices/muslim-students

Chaplaincy

The La Trobe University Chaplaincy offers friendship, networking, encouragement, counsel, pastoral care, spiritual support and practical assistance to both students and staff of all backgrounds and faiths.

For more information, go to:

👉 latrobe.edu.au/chaplaincy

Australian Development Scholarship (ADS)

La Trobe University is proud to participate in the Australian Development Scholarship (ADS) program. The University welcomes prospective students to apply for La Trobe courses in the specific priority areas of study.

The Scholarships are funded by the Australian Government for postgraduate study at Australian universities. The goal of ADS is to promote Indonesia's human resource capacity and contribute to:

- Improving economic management
- Strengthening democratic institutions and practice
- Increasing the accessibility and quality of basic social services
- Enhancing security and stability

Courses on offer at La Trobe University within priority areas of study

Priority area: Sustainable Economic Growth

Graduate Certificate in Business Administration
Graduate Diploma in Business Studies
Graduate Diploma in Economics
Master of Accounting and Financial Management
Master of Business Administration
Master of Financial Analysis
Master of Financial Analysis/Master of Islamic Banking and Finance
Master of Financial Analysis/Master of Professional Accounting
Master of Islamic Banking and Finance
Master of Professional Accounting
Postgraduate Diploma in Agricultural Science
Postgraduate Diploma in Economics
Postgraduate Diploma in Human Resource Management

Priority Sector: Democratic Institutions and Practice

Graduate Diploma in Community Planning and Development
Graduate Diploma in Humanities and Social Sciences
Graduate Diploma in Law & Legal Studies
Master of Arts in Community Development
Master of Arts in Community Development*
Master of Community Planning and Development
Master of Conflict Resolution
Master of International Policy Studies
Master of International Relations
Master of Laws International

*The course is designed to produce skills and leadership capacities relevant to a range of middle and senior management positions in government departments, agencies and the private sector. Graduates will work with communities, especially those in rural and regional areas, in community development agencies, local governments, and non-government organisations who deal with rural and regional development issues, community development, land use, planning and environmental and social policy at local, regional, national and international levels. The course is provided in three streams to suit specialist knowledge and applications in community development, in environmental and social policy, and in urban and rural planning.

Priority Sector: Social Services

Graduate Diploma in Humanities and Social Sciences
Graduate Diploma in International Development
Master of Arts (Humanities & Social Sciences)
Master of Health Administration
Master of Health Science
Postgraduate Diploma in Health Policy
Postgraduate Diploma in Health Services Management
Postgraduate Diploma in Science

Priority Sector: Education

Bachelor of Educational Studies (Graduate entry)
Graduate Diploma in Adult Literacy and Basic Education
Graduate Diploma in Education (P-12)
Graduate Diploma in Education (Primary)
Graduate Diploma in Education (Secondary)
Graduate Diploma in Educational Administration
Graduate Diploma in Educational Studies
Graduate Diploma in Industry Training and Education
Graduate Diploma in LOTE Teaching
Graduate Diploma in Outdoor and Environmental Education
Graduate Diploma in Student Welfare
Graduate Diploma in TESOL (Teaching English to Speakers of Other Languages)
Master of Adult Education
Master of Applied Linguistics
Master of Arts (Education)
Master of Arts in Student Welfare and Guidance
Master of Education
Master of Educational Leadership and Management
Master of Outdoor and Environmental Education
Master of Science and Technology Education
Master of Special Education
Master of Teaching (Primary)
Master of Teaching (Secondary)
Master of TESOL (Teaching English to Speakers of Other Languages)

For details on course syllabus, please go to:

🌐 latrobe.edu.au/coursefinder

Further course information

For further faculty, course and unit information, please visit our Handbook: 🌐 latrobe.edu.au/handbook

To view online course guides, flyers and other publications, please visit: 🌐 latrobe.edu.au/international/publications

Research Supervisors

If you are considering applying for Master's by Research, PhD or Professional Doctorate it is important to locate a supervisor who is an expert in your field of interest.

For more information, please go to:

🌐 latrobe.edu.au/international/courses/research



Melbourne's Yarra River

Introductory Academic Program for AusAID ADS students

Prior to the Welcome Festival (Orientation) for International students, ADS students participate in a five-week program, the IAP, which is a course tailored to ADS students. The IAP is designed to assist students with the transition to living and studying in Australia at La Trobe University. It aims to support and encourage students, so that they are comfortable and successful in a tertiary environment where English is the language of instruction.

The first part of the program focuses on the academic literacy skills necessary for success at a postgraduate level of study. The IAP course is a unique program and a solid foundation that enhances the study experience in Australia.

Welcome Festival

Following the IAP is the Welcome Festival for international students. Success in study can depend on adjustment to learning at La Trobe University, to living in Australia, and to familiarising yourself with the academic environment. The Welcome Festival, at all three campuses, is designed to assist new students in their first weeks in Australia by providing a range of important information sessions, as well as opportunities to meet many other students from around the world and make new friends.

There are plenty of fun activities introducing students to the local area, and the Welcome Festival's variety of occasions offer a chance to meet with staff and other students, both international and local.

La Trobe University encourages new students to take advantage of all that the Welcome Festival has to offer. For more information please go to:

🌐 latrobe.edu.au/international/predeparture/wf

Sponsored Programs at La Trobe University

How our Sponsored Programs Team can help you:

- Designated staff members liaise between AusAID, students and the University
- Help students in fulfilling the requirements of their sponsorship agreements
- Provide confidential advice to students on academic, budgeting and personal issues
- Keep in regular contact with students and Faculties to monitor academic progress
- Provide communication services for students regarding sponsorship related matters, including use of facsimile, telephone and express mail.

Email: sponsoredprograms@latrobe.edu.au

La Trobe University is a registered provider under the Commonwealth Register of Institutions and Courses for Overseas Students (CRICOS). CRICOS Provider 00115M.

Disclaimer: The information contained in this publication is indicative only and is designed as an aid to students contemplating enrolment at La Trobe University. While every effort is made to provide accurate information, the University does not give any warranties in relation to the accuracy and completeness of the contents. The University does not accept responsibility for any loss or damage occasioned by use of the information contained in this publication. The University also reserves the right to discontinue or vary arrangements, courses, subjects (units) and admission requirements at any time without notice and at its discretion. While the University will try to avoid or minimise any inconvenience, changes may also be made to courses, subjects and staff after enrolment. The University may also set limits on the number of students in a course or subject (unit). For course information updates, please visit: www.latrobe.edu.au/international.

Course and subject (unit) information is also published in the University Handbooks, see: www.latrobe.edu.au/handbook.

The ESOS Act: Education Services For Overseas Students (ESOS) Australia provides the world's most rigorous protection for international students through the Education Services for Overseas Students (ESOS) Act 2000. The ESOS Act requires those institutions providing education to international students to meet nationally consistent standards in their education delivery, facilities and services. The Australian Government publication The ESOS framework – providing quality education and protecting your rights provides a useful summary of the ESOS framework, for students and staff. Please visit: www.aei.gov.au/AEI/ESOS/Default.htm.

Published by La Trobe University, August 2009.

Telephone

Future students: (+61 3) 9627 4805

Freecall (within Australia): 1800 619 768

Current students or enquiries related to
submitted applications: (+61 3) 9479 1199

Fax (+61 3) 9479 3660

Email international@latrobe.edu.au

Online Enquiry latrobe.edu.au/international/enquiry

La Trobe University Overseas Representatives

La Trobe University has a worldwide network
of representatives who can assist you with applying
to study at La Trobe.

latrobe.edu.au/international/contact

Any Questions? international@latrobe.edu.au

latrobe.edu.au/international



Infinite Possibilities™